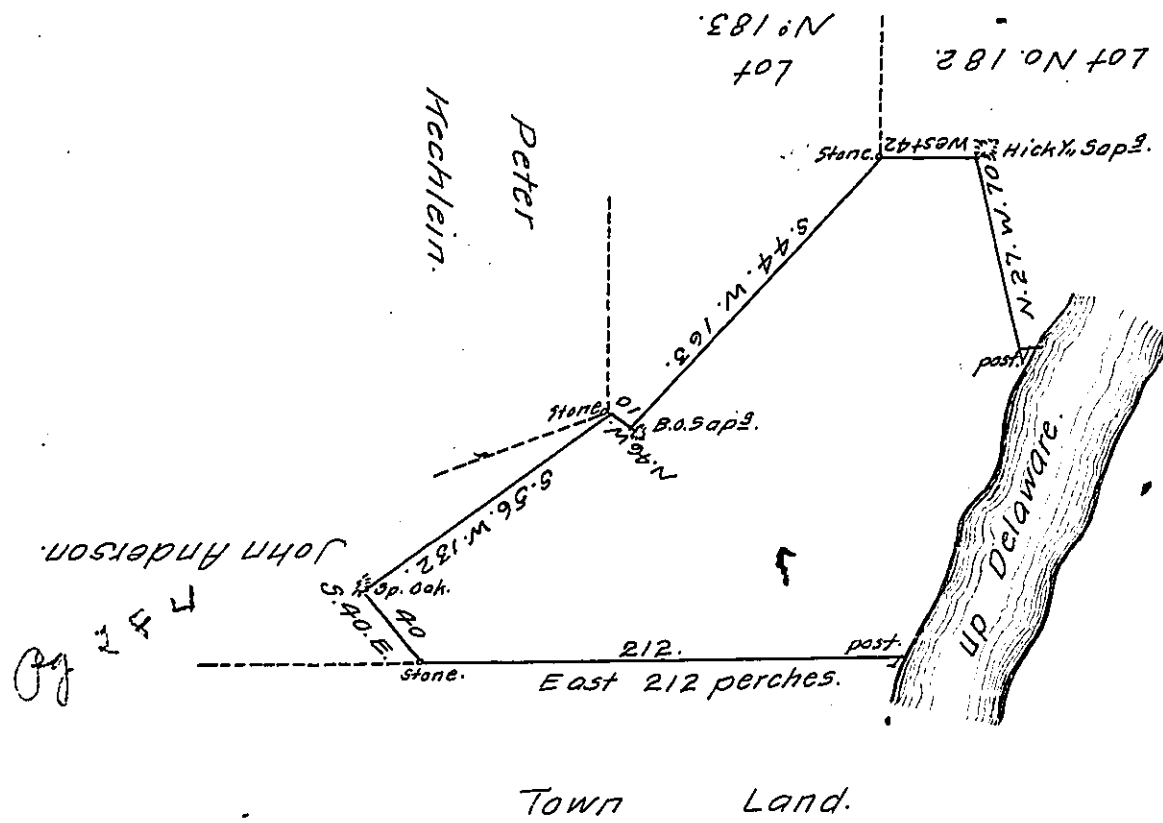


FORM No. 1.



A Draught of a Tract of Land, part of the Honourable the Proprietaries
 Dry Land, situate in _____ Township, Northampton County Containing
 Two Hundred & ten Acres & 01 perches with Allowance of 6 % Cent. Surveyd
 the 10th September, 1764 for Lewis Gordon, Esquire.

James Scull. —

IN TESTIMONY that the above is a copy of the original remaining on file in
 the Department of Internal Affairs of Pennsylvania, made
 conformably to an Act of Assembly approved the 16th day of
 February, 1833, I have hereunto set my Hand and caused
 the Seal of said Department to be affixed at Harrisburg,
 this thirty first day of May, 1910.

Henry Howe
 Secretary of Internal Affairs.